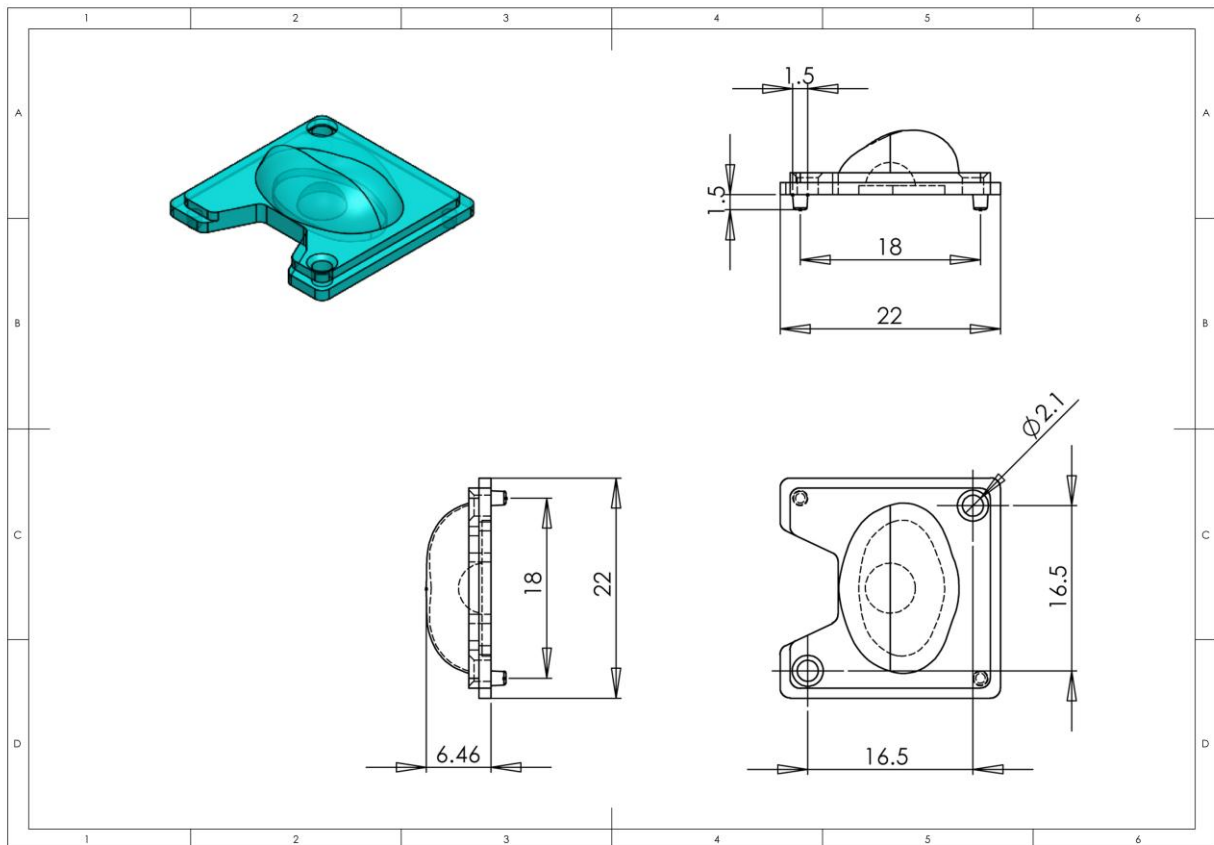


Product CodeTLED SL-CM01
Cree XTE**Description**Street lens for
Cree XTE leds
XPG & XML compatiblePlastic optics
design &
manufacturing**T LED****Geometrical Data**

Area	22x22mm
Thickness	6.46mm
LED housing	Ø 5mm
Feet	1.5mm



Product Code

TLED SL-CM01
Cree XTE

Description

Street lens for
Cree XTE leds
XPG & XML compatible

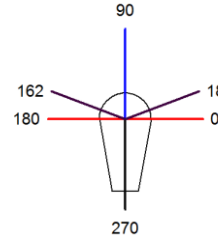
Plastic optics
design &
manufacturing



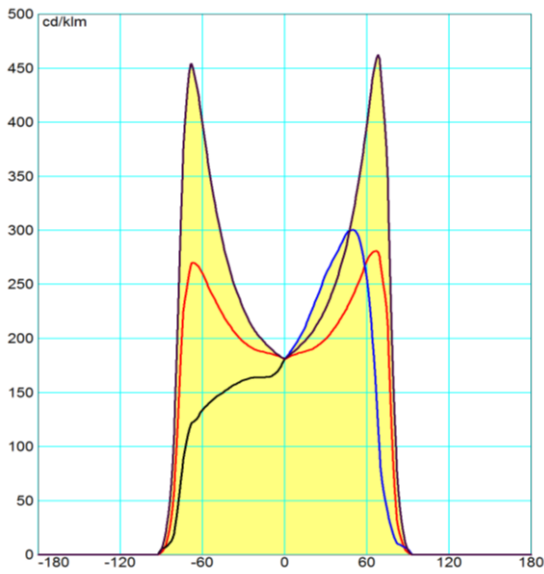
T LED

Optical Data

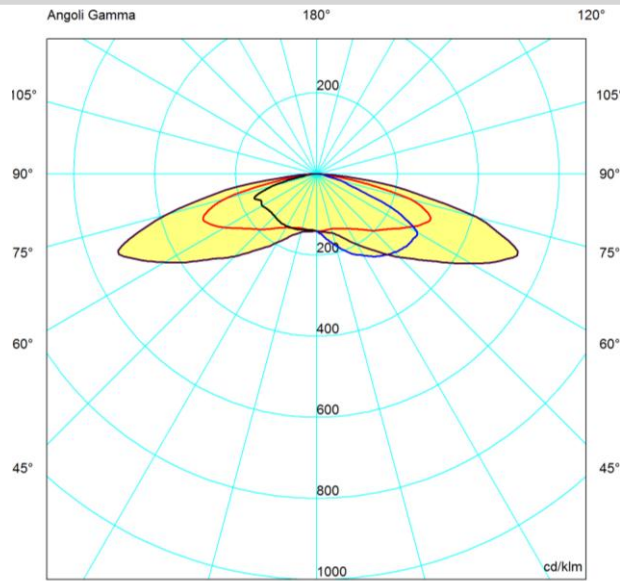
Peak intensity 533cd/klm
Peak position C=18°-162° G=69°
IES Classification Type II-M



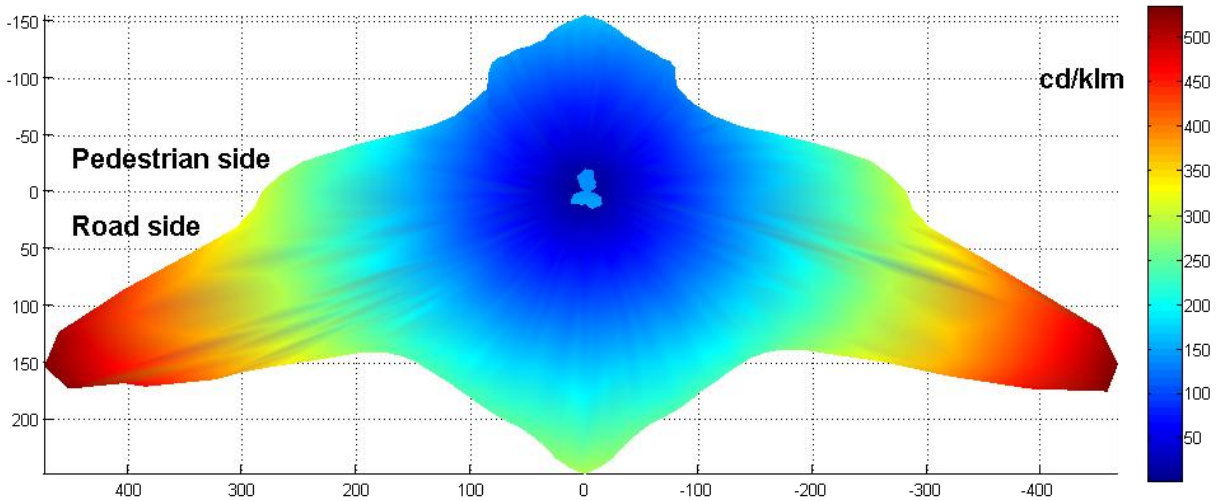
Cartesian diagram



Polar diagram



Photometric solid



Product Code

TLED SL-CM01
Cree XTE

Description

Street lens for
Cree XTE leds
XPG & XML compatible

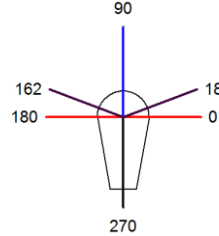
Plastic optics
design &
manufacturing



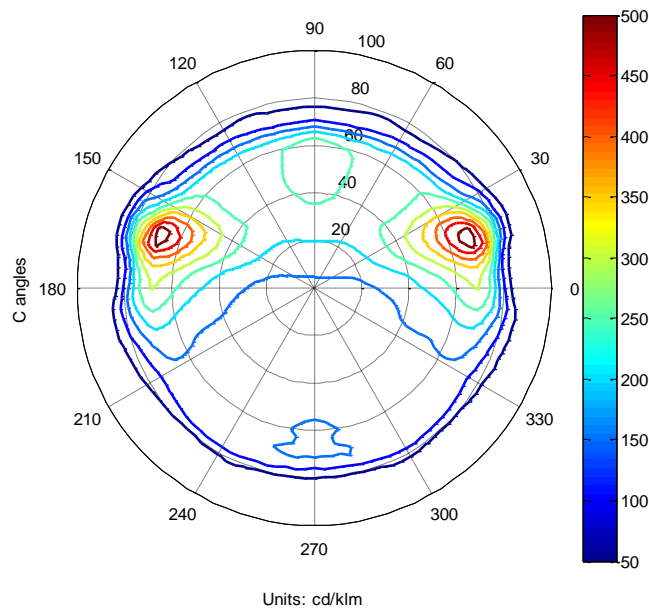
T LED

Optical Data

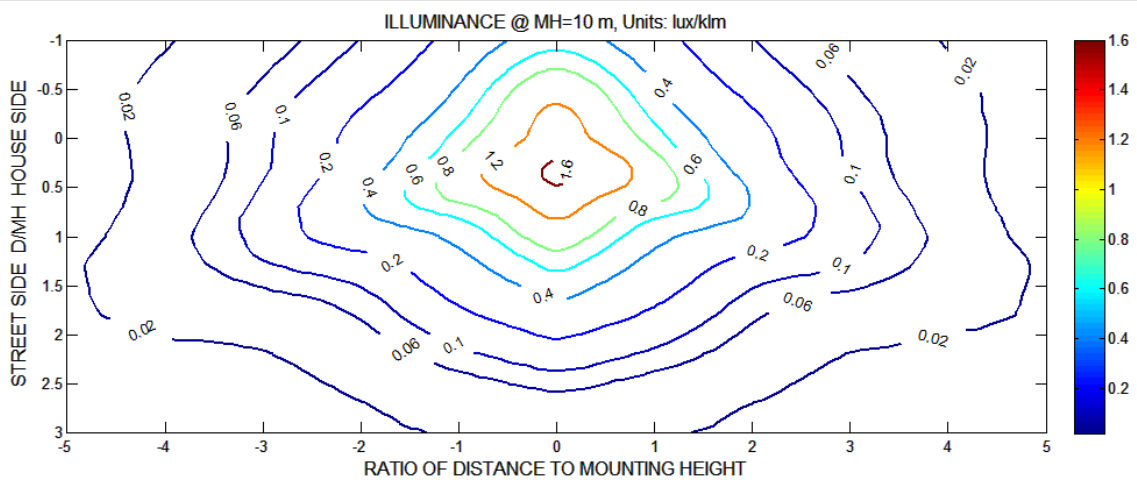
Peak intensity 533cd/klm
Peak position C=18°-162° G=69°
IES Classification Type II-M



Isocandela diagram



Isolux diagram on street



Height [m]

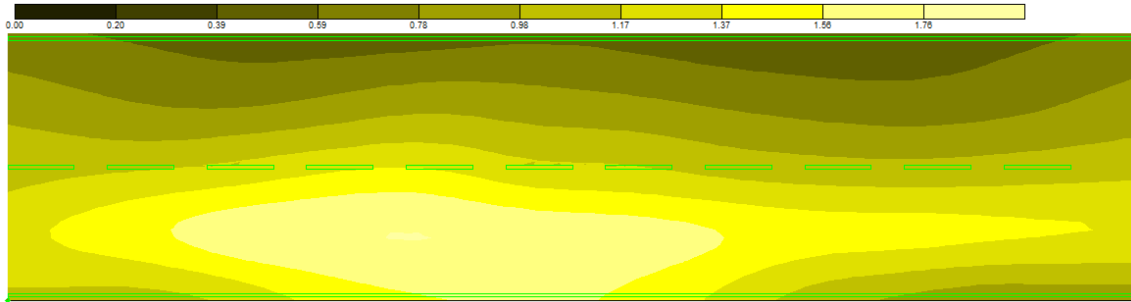
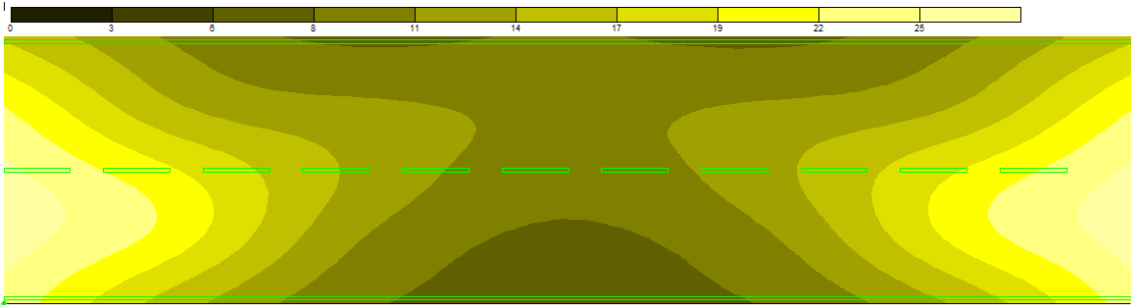
5 6 7 8 9 10 11 12 13

Factor

4 2.778 2.041 1.563 1.235 1 0.826 0.694 0.592

Product CodeTLED SL-CM01
Cree XTE**Description**Street lens for
Cree XTE leds
XPG & XML compatiblePlastic optics
design &
manufacturing**T LED****Lighting features**

Height	8m	Carriageway	8m
Distance	34m	Lanes	2
Inclination	0°	Bracket length	0m (road side)
Maintenance factor	80%	Power	12250lm

Luminance (cd/m²)**Illuminance (lux)****Performance****L_m**
1cd/m²**U_o**
0.46**U_l**
0.73**TI**
14.6%**SR**
0.64**Class (13201 standard)****ME3a**