

**Product Code**  
TLED SL-CX01

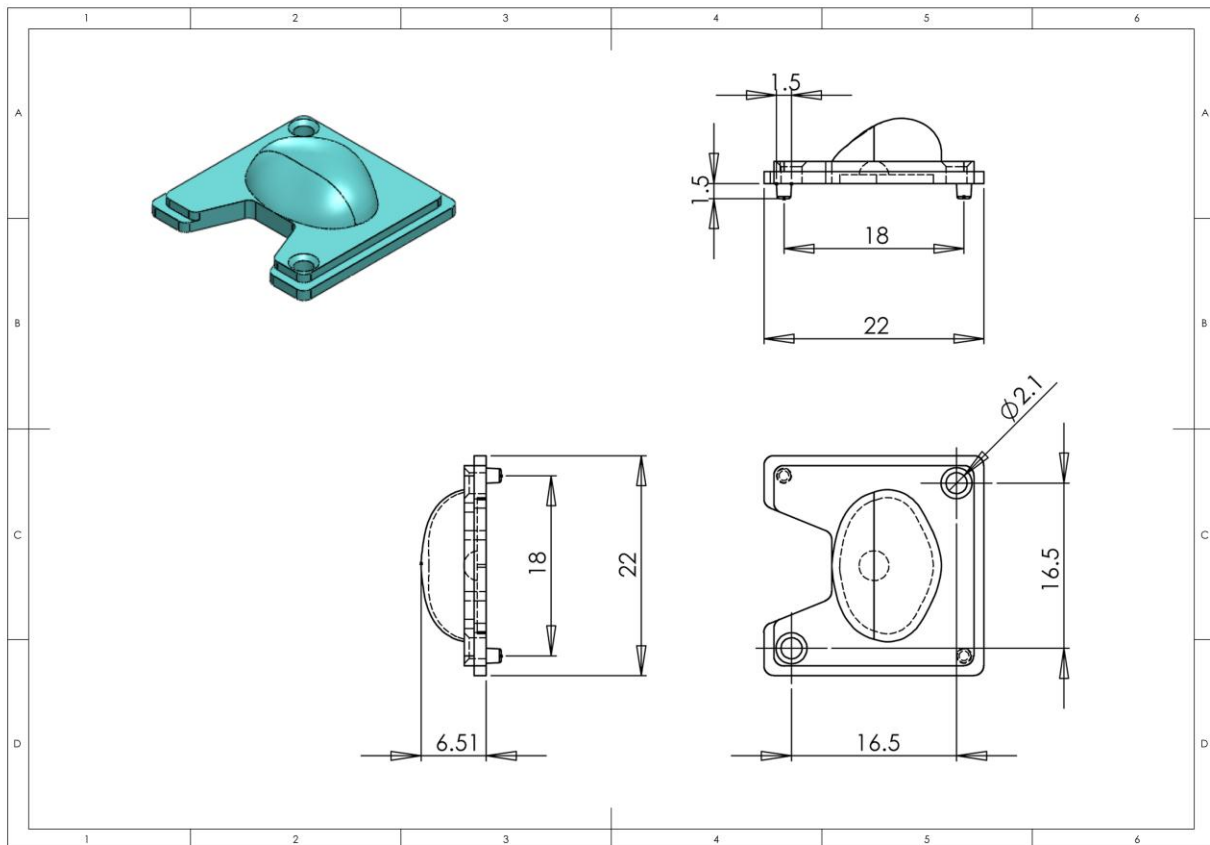
**Description**  
Street lens for  
Cree XPG leds

Plastic optics  
design &  
manufacturing



### Geometrical Data

Area	22x22mm
Thickness	5.43mm
LED housing	Ø 3mm
Feet	1.5mm



**Product Code**  
TLED SL-CX01

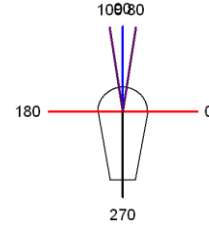
**Description**  
Street lens for  
Cree XPG leds

Plastic optics  
design &  
manufacturing



**Optical Data**

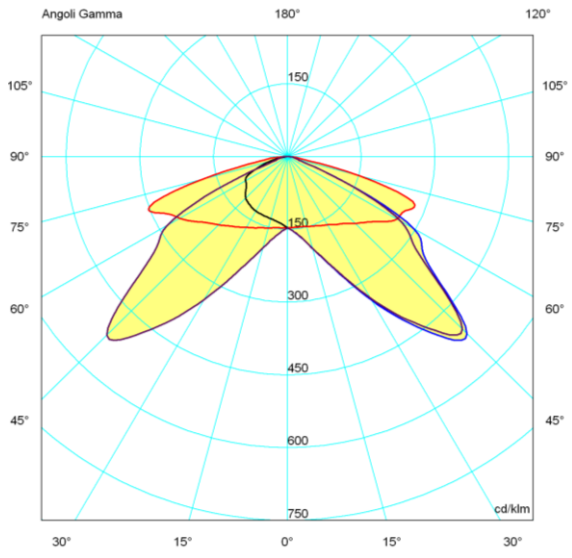
Peak intensity 490cd/klm  
Peak position C=80°-100° G=45°  
IES Classification Type II-VS



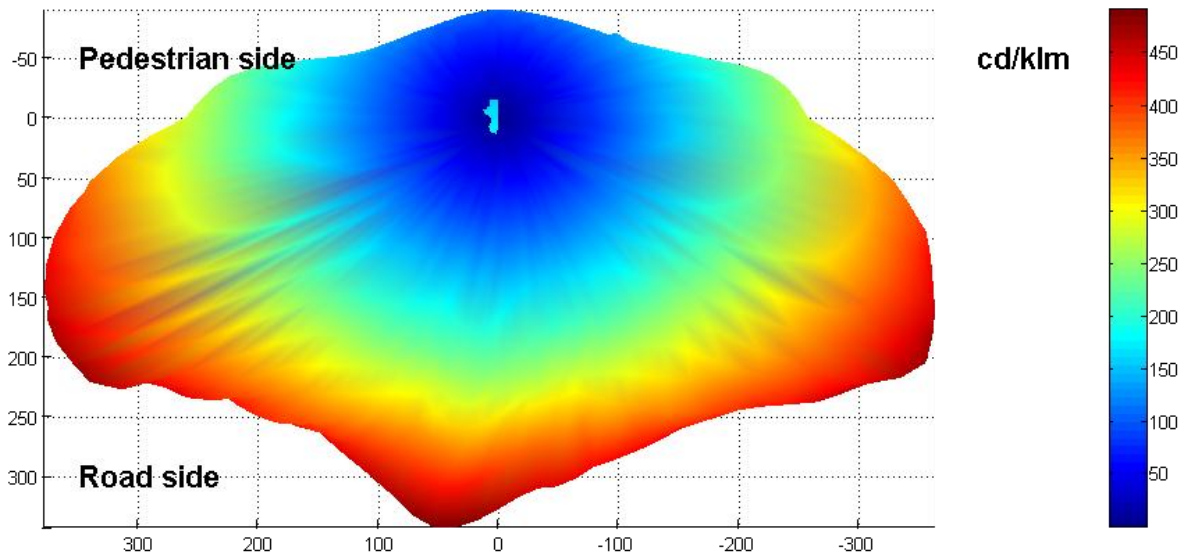
**Cartesian diagram**



**Polar diagram**



**Photometric solid**



**Product Code**  
TLED SL-CX01

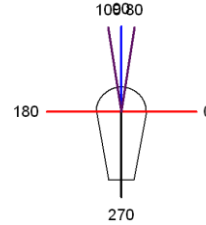
**Description**  
Street lens for  
Cree XPG leds

Plastic optics  
design &  
manufacturing

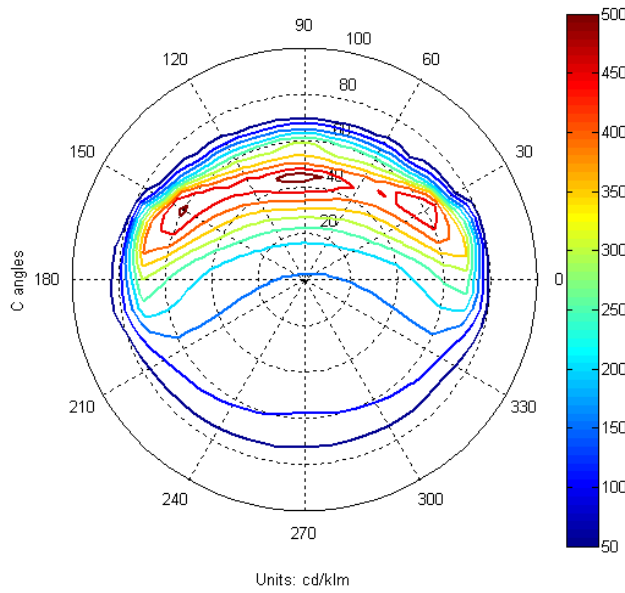


**Optical Data**

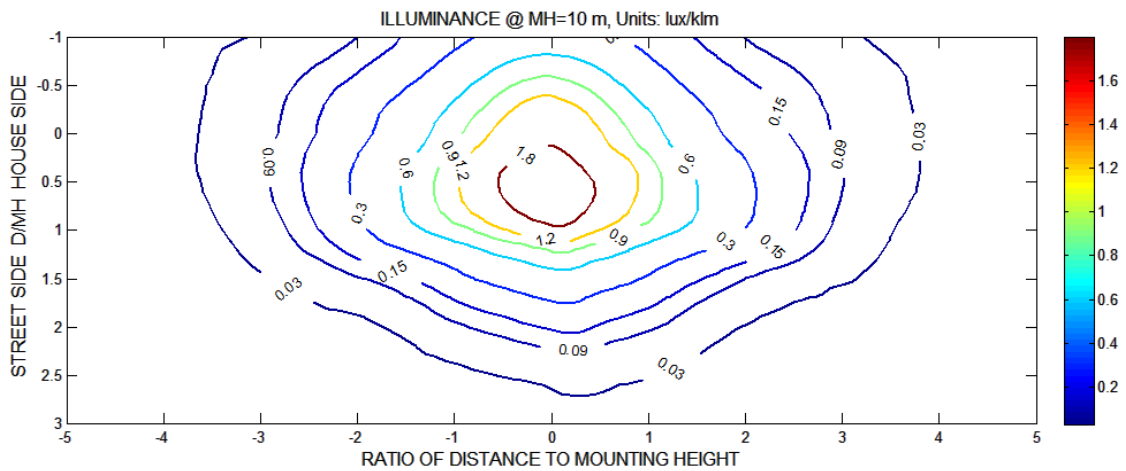
Peak intensity 520cd/klm  
Peak position C=80°-100° G=45°  
IES Classification Type II-VS



**Isocandela diagram**



**Isolux diagram on street**



Height [m]	5	6	7	8	9	10	11	12	13
Factor	4	2.778	2.041	1.563	1.235	1	0.826	0.694	0.592

**Product Code**  
TLED SL-CX01

**Description**  
Street lens for  
Cree XPG leds

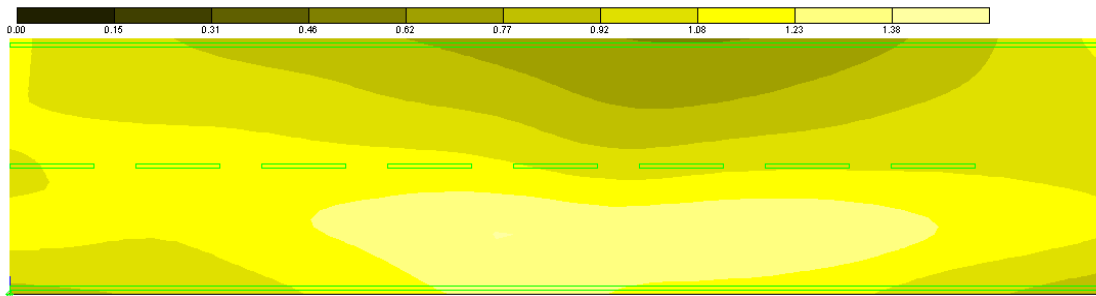
Plastic optics  
design &  
manufacturing



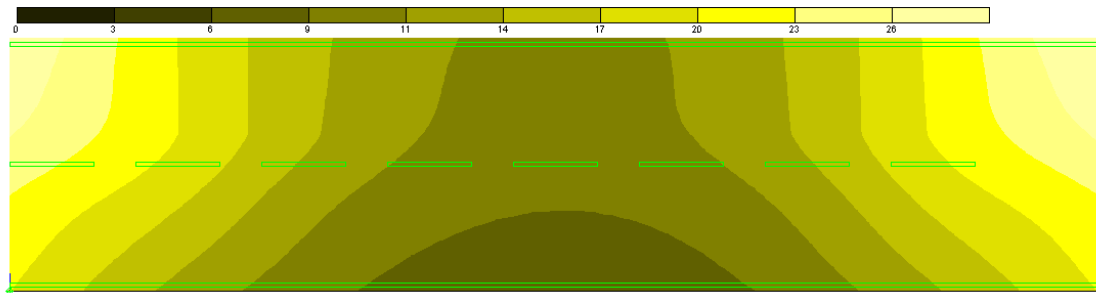
**Lighting features**

Height	7m	Carriageway	6m
Distance	26m	Lanes	2
Inclination	3°	Bracket length	0m (road side)
Maintenance factor	80%	Power	7800lm

**Luminance (cd/m<sup>2</sup>)**



**Illuminance (lux)**



Performance	L <sub>m</sub>	U <sub>o</sub>	U <sub>l</sub>	TI	SR	Class (13201 standard)
	1cd/m <sup>2</sup>	0.57	0.72	10%	0.74	<b>ME3a</b>

