

Product Code
TLED SL-ST01

Description
Street lens for
Cree XTE leds

Plastic optics
design &
manufacturing



Geometrical Data

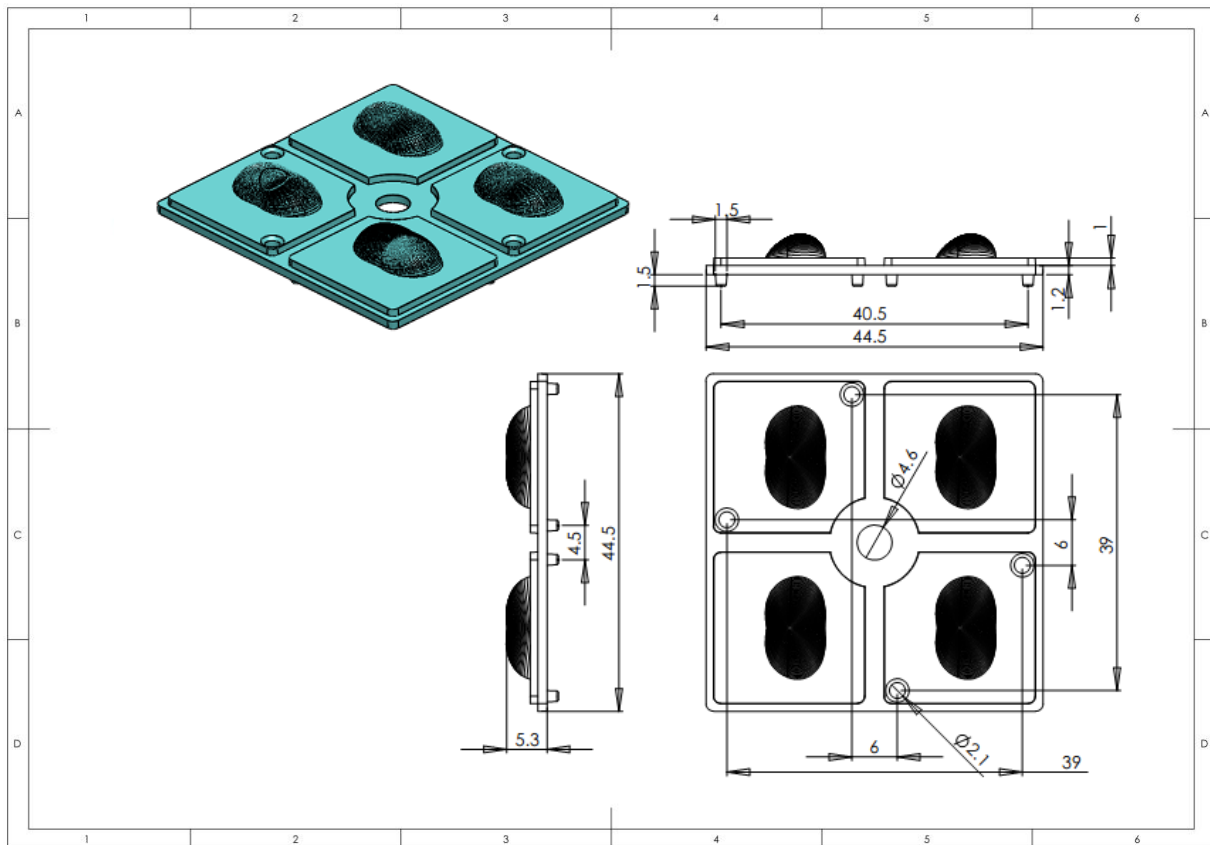
Area 44.5x44.5mm

Thickness 5.3mm

LED housing \varnothing 3.6mm

Feet 1.5mm

2x2 grid



Product Code
TLED SL-ST01

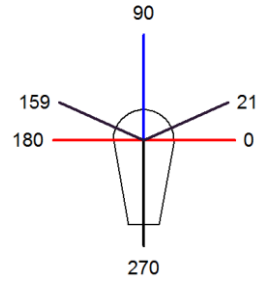
Description
Street lens for
Cree XTE leds

Plastic optics
design &
manufacturing



Optical Data

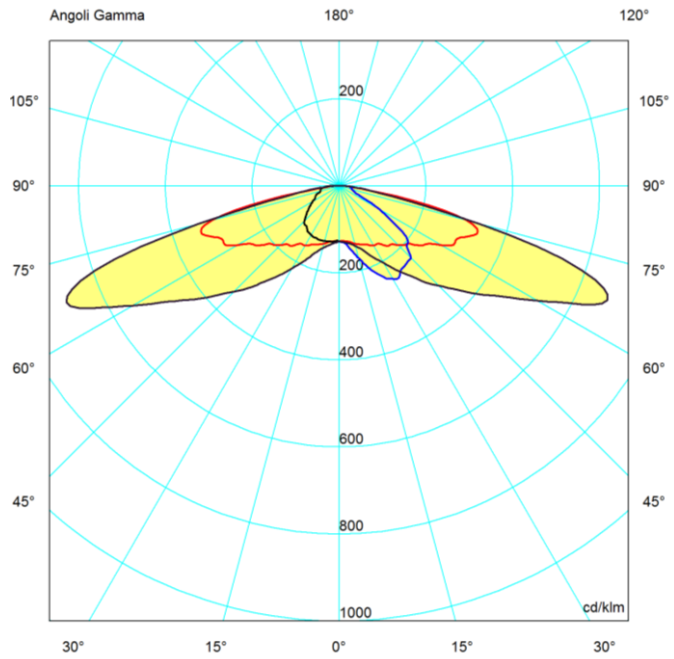
Peak intensity 678cd/klm
Peak position C=21°-159° G=66°
IES Classification Type II-S



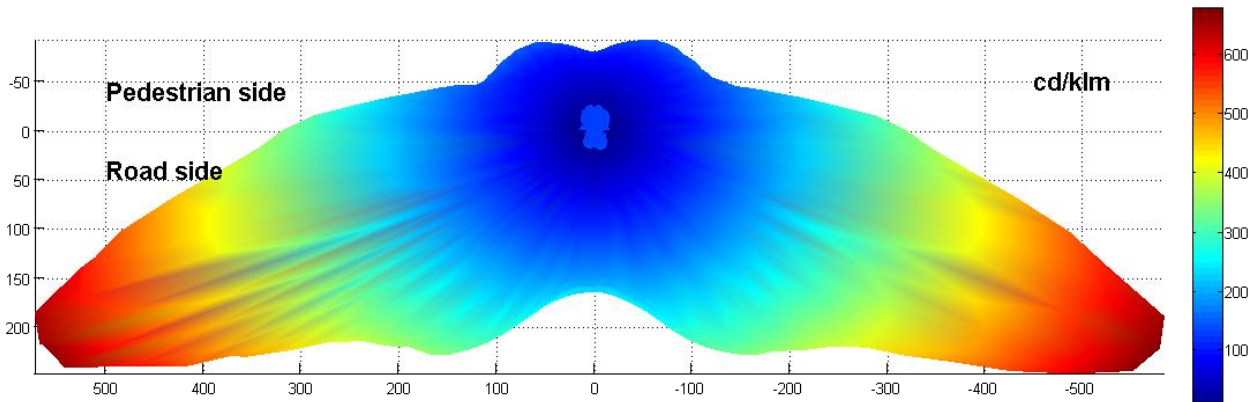
Cartesian diagram



Polar diagram



Photometric solid



Product Code
TLED SL-ST01

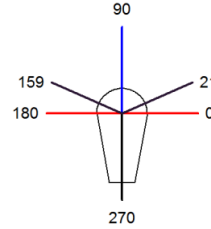
Description
Street lens for
Cree XTE leds

Plastic optics
design &
manufacturing

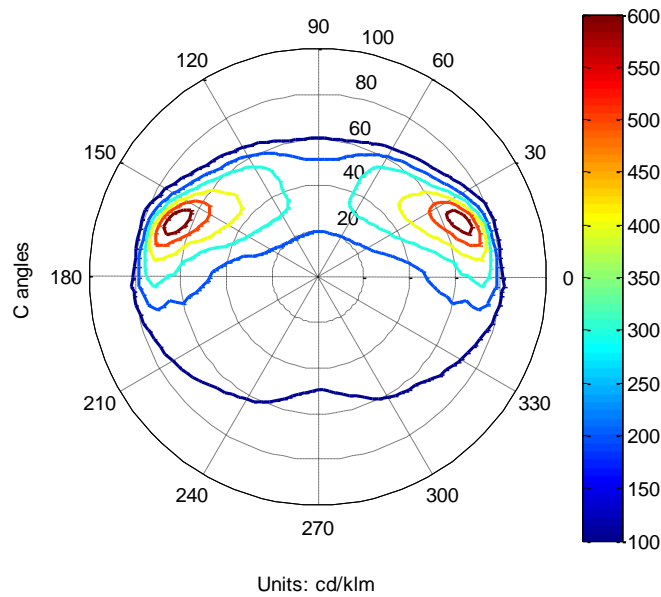


Optical Data

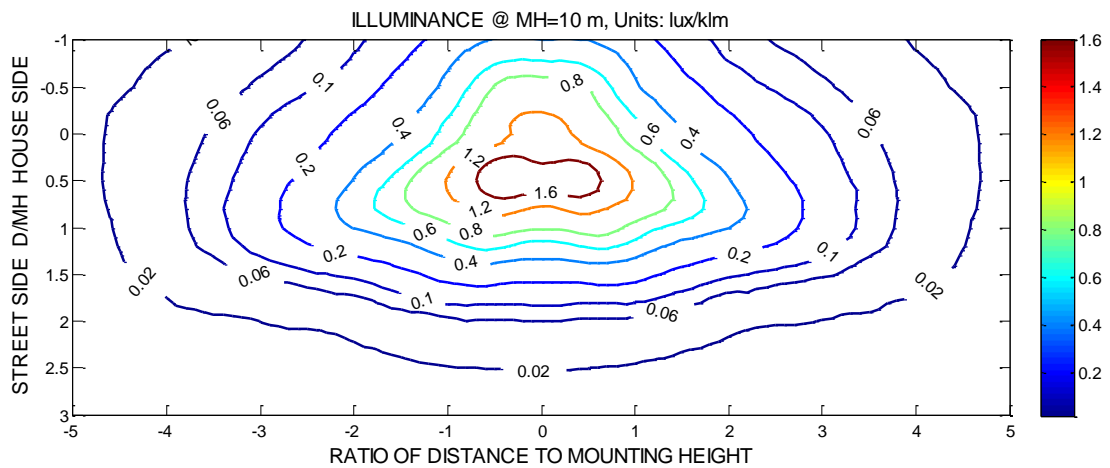
Peak intensity 678cd/klm
Peak position C=21°-159° G=66°
IES Classification Type II-S



Isocandela diagram



Isolux diagram on street



Height [m]	5	6	7	8	9	10	11	12	13
Factor	4	2.778	2.041	1.563	1.235	1	0.826	0.694	0.592

Product Code
TLED SL-ST01

Description
Street lens for
Cree XTE leds

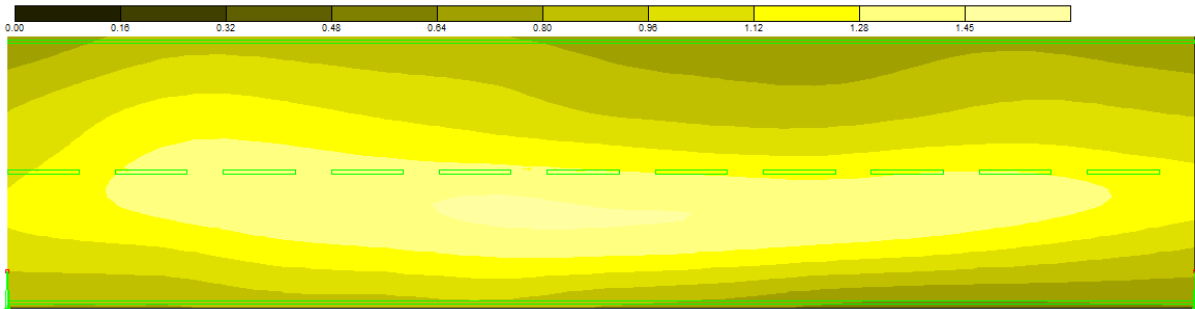
Plastic optics
design &
manufacturing



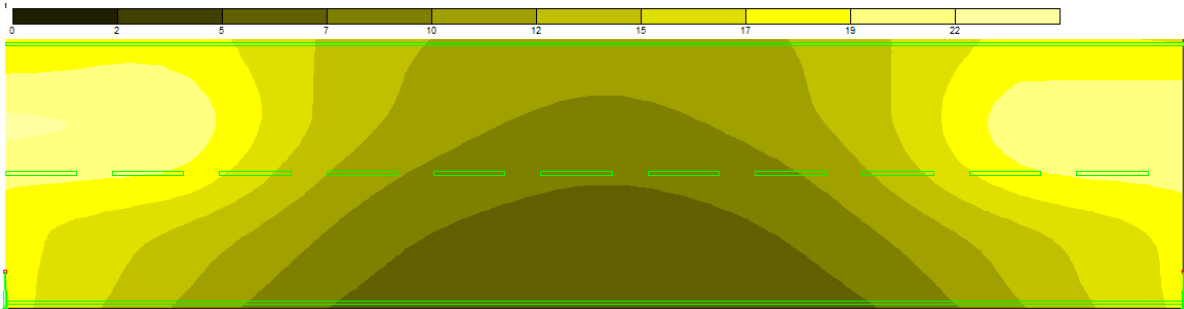
Lighting features

Height	8m	Carriageway	7.5m
Distance	33m	Lanes	2
Inclination	0°	Bracket length	1m
Maintenance factor	80%	Power	9350lm

Luminance (cd/m²)



Illuminance (lux)



Performance	L _m	U _o	U _l	TI	SR	Class (13201 standard)
	1cd/m ²	0.65	0.71	14.8%*	0.65	ME3a

* single lens value. Real installations lead to lower TI values

